



FROM

\$821,792*

Lot 1124 Postmaster Way
Kyneton on Riverside
Kyneton

AMIRA 22

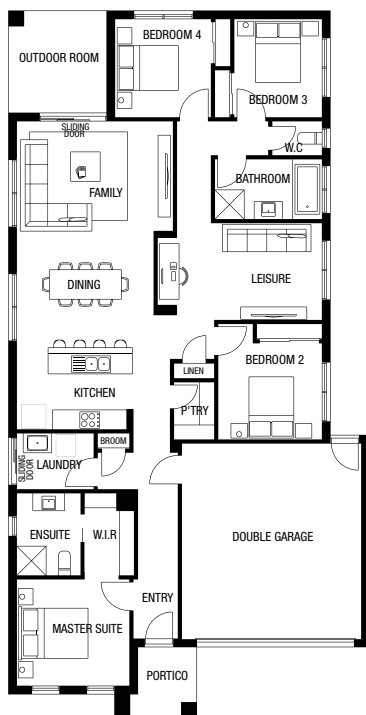
Nordic Facade

Block size: 594m²

Land ready to build: March 2026

*Price excludes: fencing, landscaping, concrete pavers, planter boxes, decking.

4 | 2 | 2 | 2



PACKAGE INCLUDES:

The Amira 22 with Nordic facade built to our industry leading base specifications and land, plus:

- Lifetime Structural guarantee
- 7-star energy rating
- Double glazed windows & sliding doors
- PV solar system
- 2700mm Ceilings
- Floor Coverings Throughout
- Ducted Heating & Evaporative cooling
- 20mm zenith stone benchtops to kitchen
- 20mm zenith stone benchtops to bathrooms
- BAL 12.5 bushfire requirements
- 900mm Kitchen Appliances
- Dishwasher
- Driveway (Up to 35m²)



Floor plan shown will vary from facade image shown. Floor plan does not reflect developer guidelines.

1300 METRICON
metricon.com.au

FREEDOM

m
metricon

Image may include upgrade items and may depict fixtures, finishes and features not supplied by Metricon such as landscaping and fencing. Accordingly, any prices in this flyer do not include the supply of any of those items. *Packages correct at time of publishing and subject to change without notice. Package price excludes flooring, external lighting, telephone service, customer account opening fees, stamp duty on land, legal fees and conveyancing costs including titles and property report. Floor plan is a representation of a Aspire facade unless otherwise stated. Metricon reserves the right to alter the images or descriptions without notice. See metricon.com.au for full details of standard inclusions and /or terms and conditions. Land supplied by developer. Land prices and availability are subject to change without notice. All home & land packages are subject to developer approval. #For details on our lifetime structural guarantee please read our terms and conditions at <http://metricon.com.au/terms-and-conditions>