



Price excludes upgrade items above standard specification such as feature render and bricks, front entrance timber decking, front entry door, brick infills above garage, external lighting, fencing, concrete paths and driveway. Façade Image may also contain items not supplied by Metricon Homes, namely landscaping and planter boxes.

FROM

## \$850,740

Price based on Titled Date of Mar 2026

**Kyneton on Riverside**

Lot 1124 Postmaster Way, Kyneton

### ATESSA 25

### YALE FACADE

**BLOCK SIZE: 594m<sup>2</sup>**



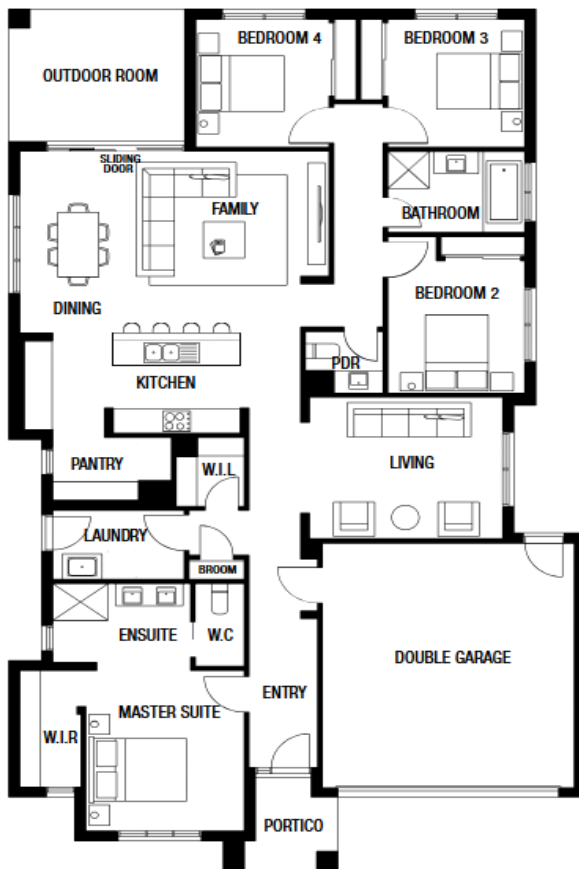
**PACKAGE INCLUDES:**

The Atessa 25 with Yale facade built to our industry leading base specifications, plus:

- Lifetime Structural guarantee
- 7-star energy rating
- Double glazed windows & sliding doors
- PV solar system
- 2700mm Ceilings
- Floor Coverings Throughout
- Ducted Heating & Evaporative cooling
- 20mm zenith stone benchtops to kitchen
- 20mm zenith stone benchtops to

bathrooms

- BAL 12.5 bushfire requirements
- 900mm Kitchen Appliances
- Dishwasher
- Driveway (Up to 35m<sup>2</sup>)



**1300 METRICON** |  
www.metricon.com.au

To find out more, contact  
James Bone on 0434 518 975

**FREEDOM**

**m**  
metricon